



Leather & Beef: Adding Skin to the Game

Anne Gillespie, Director of Industry Integrity,
Textile Exchange

Global Conference on Sustainable Beef / Global Forum on Responsible Leather
October 9-12 | Kilkenny, Ireland

Thank you GRSB!





VISION

We envision a global textile industry that protects and restores the environment and enhances lives.

MISSION

Textile Exchange inspires and equips people to accelerate sustainable practices in the textile value chain. We focus on minimizing the harmful impacts of the global textile industry and maximizing its positive effects.

GOALS

1. Embed sustainability into evolving business and supply chain strategies.
2. Make it easier for companies to adapt to changing opportunities and requirements in textile sustainability.
3. Ensure that actions taken toward sustainability result in real and meaningful change.



Textile Exchange Around the World

Our 20 team members and ambassadors are spread across 11 countries around the globe





MEMBERSHIP NETWORK

Farm/Fiber



Shanghai Different Chemical Fiber Co.ltd

Suppliers/Manufacturers



Brands/Retailers



Williams-Sonoma

Burberry



Eileen Fisher



otto group

Friends of Textile Exchange





TextileExchange

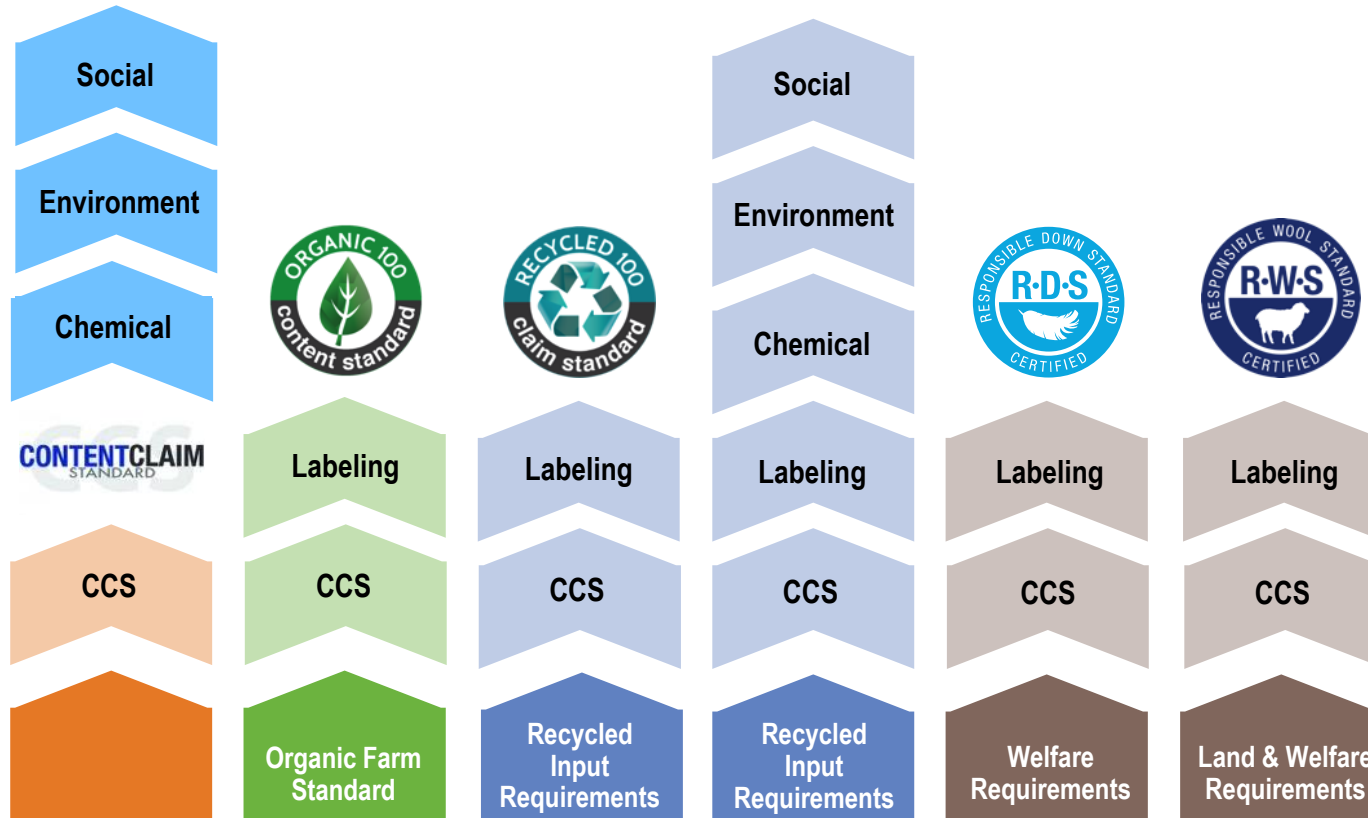


UNITED BY ACTION: **ACCELERATING SUSTAINABILITY IN TEXTILES AND FASHION**

October 22-24 | Milan, Italy



<https://www.travelandleisure.com/articles/hidden-treasures-in-milan>





Responsible Leather is a Textile Exchange initiative aimed at addressing the many issues found within the global leather supply chain.

Responsible Leather Round Table (RLRT)



VISION

We envision a world in which all aspects of the leather value chain are environmentally and socially responsible, promote animal welfare, and is economically viable.



MISSION

Advance responsibility and continuous improvement in the global leather value chain through leadership, inclusive multi-stakeholder engagement and collaboration.



GOALS

1. A platform for stakeholders in the leather industry to engage with each other, share information, and identify common challenges and opportunities.
2. A structure for interacting with other organizations and government bodies.
3. **A forum to agree on priority issues and take action to advance our mission and vision.**

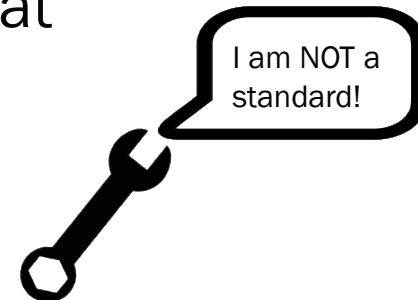
Sector Membership

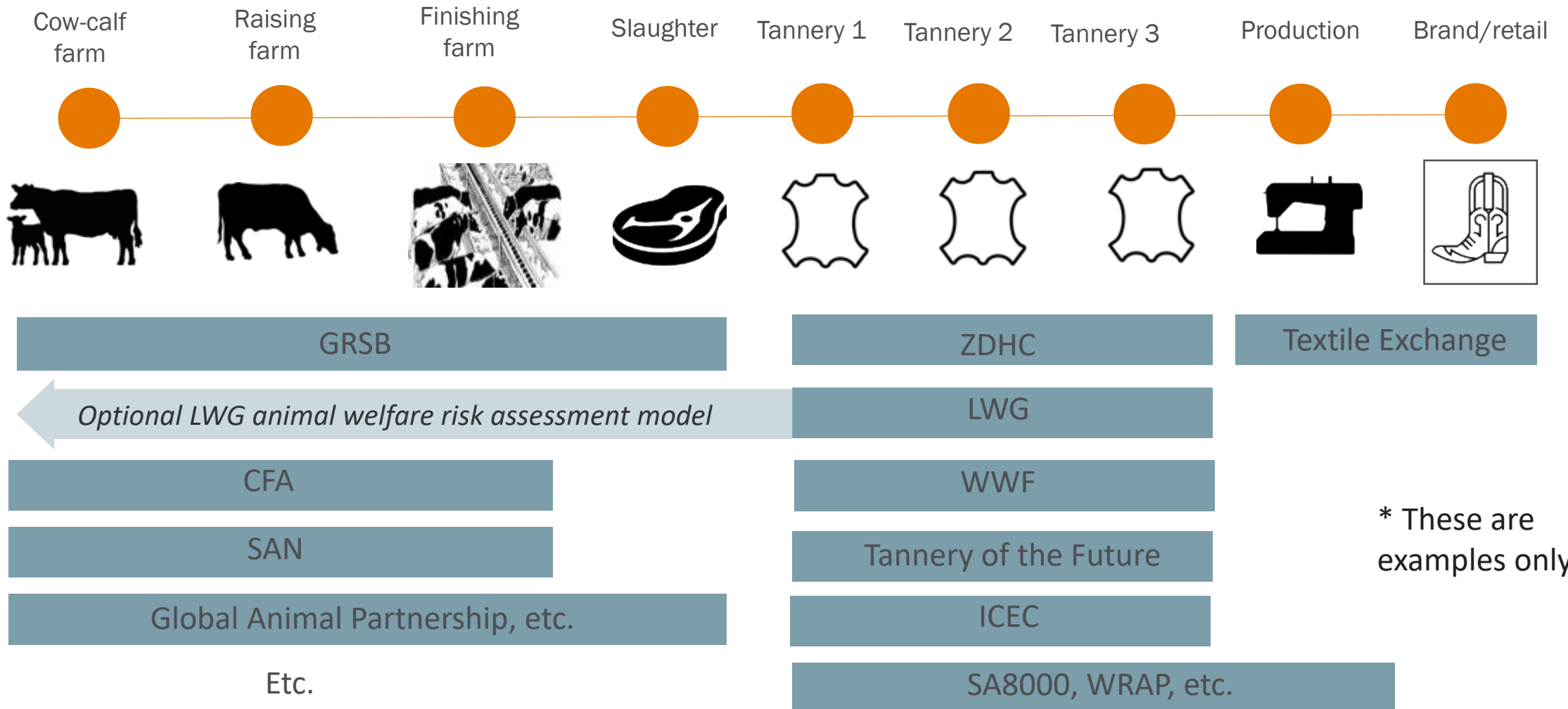
★ = voting member

- ★ **1. Brands and Retailers**
Companies and associations who bring leather products to consumers.
- ★ **2. Supply Chain**
Companies and associations who convert and supply materials for further processing or sale of leather goods.
- ★ **3. Producers**
Farmers, organizations and associations who are actively engaged in the ownership and management of live cattle.
- ★ **4. Civil Society**
Academic institutions, non-governmental organizations, non-commercial institutions, foundations, and associations with a stake in the cattle and leather value chains.
- 5. Professional Services (Consulting Members)**
Individuals or organizations such as regulatory authorities, governmental agencies, consulting/auditing firms and donor organizations; do not belong to one of the voting constituencies, but may request membership as Consulting Members.

Responsible Leather Assessment Tool (RLA) Goals

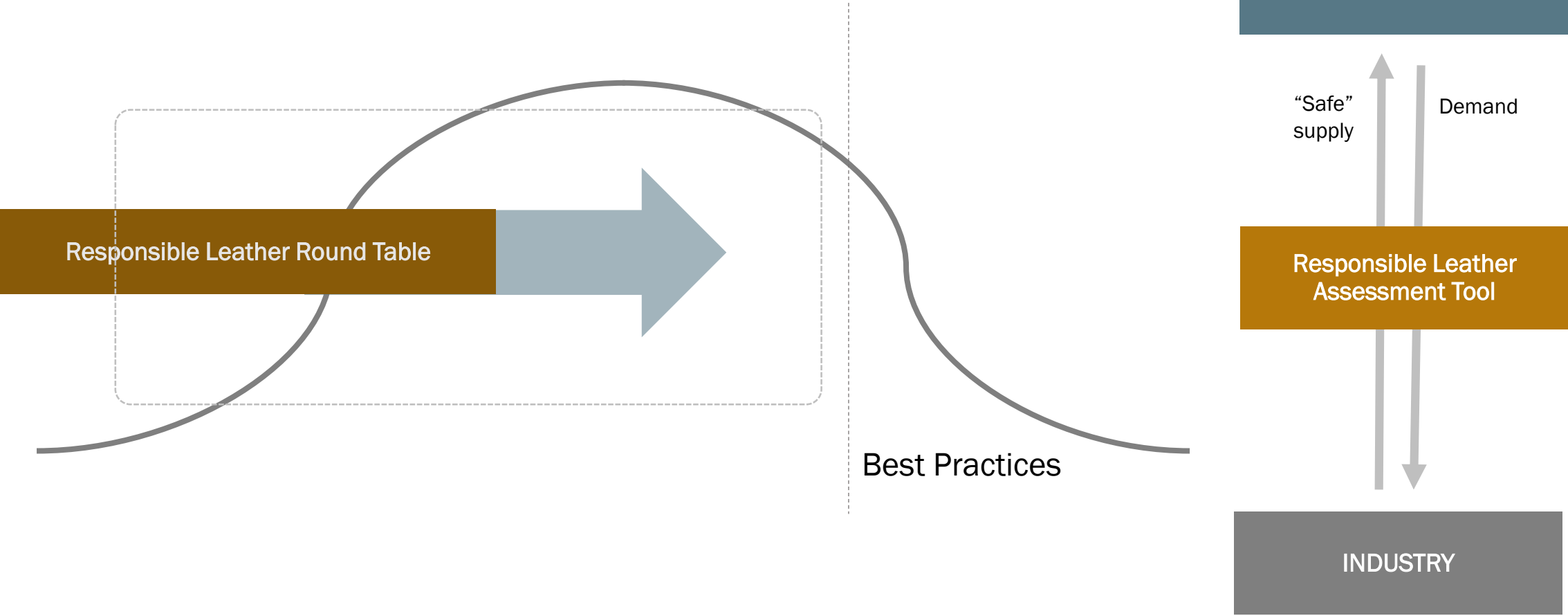
1. Develop a tool that recognizes and drives best practices in the leather industry, leading to positive social, environmental and animal welfare impacts.
2. Establish a clear benchmark for best practices.
3. Provide companies with a means to link their sourcing to more responsible practices and make accurate claims about how they source.
4. Leverage and add value to the existing tools and programs that are driving better practices in the leather industry.
5. Reward and influence the leather industry to incentivize practices that respect animals, people and the environment.





Responsible Leather Assessment Tool

Theory of Change



Animal Welfare
Farm
Transport
Slaughter
Environmental Impacts
Farm (deforestation)
Slaughter
Tanning
Social Impacts
Farm
Slaughter
Tanning
Traceability
Chain of Custody
Book & Claim
Data

	RLA v1	RLRT	RLA v2	RLRT
Animal Welfare	●		●	
Farm	●		●	
Transport	●		●	
Slaughter	●		●	
Environmental Impacts				
Farm (deforestation)	●		●	
Slaughter	○	●	●	
Tanning	●		●	
Social Impacts				
Farm	○	●	○	●
Slaughter	○	●	●?	●
Tanning	●?	●	●	
Traceability				
Chain of Custody	●		●	
Book & Claim	●		●	
Data	●		●	

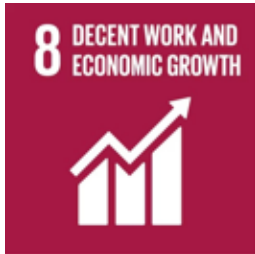


Why leather?

Leather has Global Impacts



Leather tanning uses large amounts of water in combination with sometimes harmful chemicals. If not addressed properly, tanning operations can have significant impacts on water quality.



From smallholder farmers to slaughterhouse workers to sewers, people contribute to and are impacted by the production of leather. There are many opportunities to improve working conditions and livelihoods of the people involved.

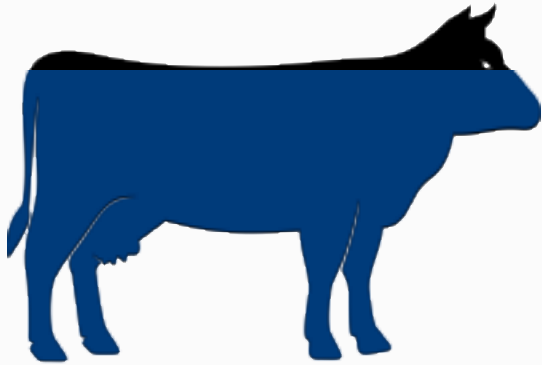


Through its connection to the beef industry, leather is strongly linked to the climate impacts of land use. Requiring leather to originate from farms that are not deforesting will have a positive impact on greenhouse gas emissions.



Cattle farming gives the opportunity to “take urgent and significant action to reduce the degradation of natural habitats, halt the loss of biodiversity and, by 2020, protect and prevent the extinction of threatened species.”

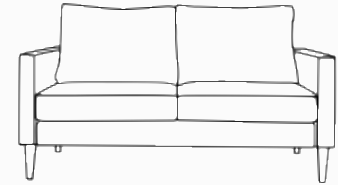
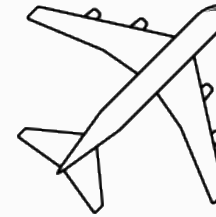
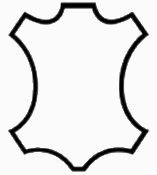
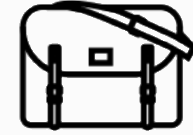
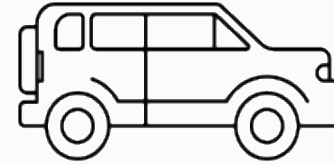
The Numbers



According to LCA calculations, 95% of the economic value is allocated to food. (lcafood2014.org)

Therefore,

Leather is < 5% of the economic value of a cow



The leather industry is about **\$40 billion**

The value of the RLI stakeholders is
> \$1.2 trillion



The apparel industry is **\$1.7 trillion**

Europe's meat and dairy production must halve by 2050, expert warns



“Europe’s animal farming sector has exceeded safe bounds for [greenhouse gas emissions](#), [nutrient flows](#) and [biodiversity loss](#), and urgently needs to be scaled back, according to [a major report](#). ”

“The study calls for the European commission to urgently set up a formal inquiry mandated to propose measures – including taxes and subsidies – that “discourage livestock products harmful to health, climate or the environment”. Livestock has [the world’s largest land footprint](#) and is growing fast, with close to 80% of the planet’s agricultural land now used for grazing and animal feed production, even though meat delivers [just 18% of our calories](#). ”

New Report: Biotech Fabrics May Threaten Farmer Livelihoods, Ecosystems

By Jasmin Malik Chua



pes Love & sex Health & fitness Home & garden Women Family Travel Money

Helsinki fashion week to ban leather as vegan fabrics catch on

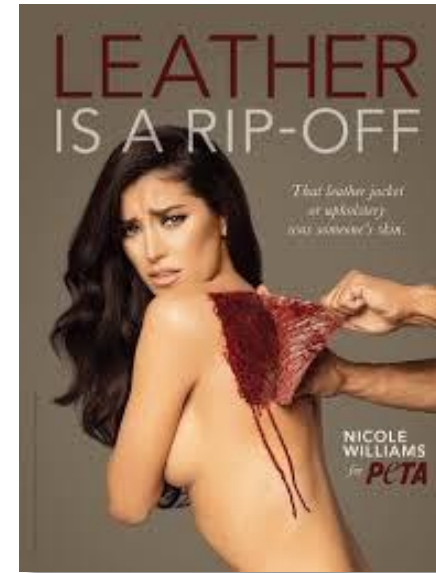
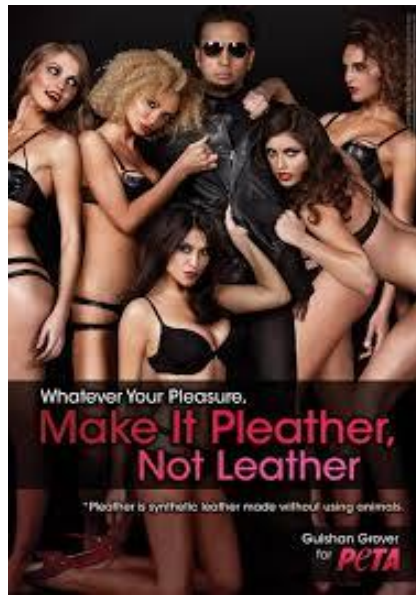
Vegan collections feature materials such as synthetic suede and B-mesh made from recycled bottles



▲ A decision by Stella McCartney, who has been the most famous advocate of vegan materials in the fashion

“ETC Group and Fibershed ... cautions that any commercial-scale expansion of biosynthetic fabrics, such as those derived from genetically engineered (GE) microorganisms, could exert undue pressures on ecosystems while creating potentially dangerous sources of biotech waste. Worse, by diverting support from so-called “truly sustainable” natural fiber economies, such technologies could also undermine farmers worldwide.”

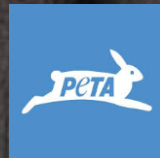
“The global [synthetic leather market](#) is expected to reach USD 85.05 billion by 2025, according to a new report by Grand View Research, Inc. Globally increasing applications in foot wears has been a major factor driving market growth. In addition, increasing focus towards animal rights led by several organizations and rising stringency in laws governing real leather are propelling demand for synthetic leather.”







Why Beef?





VISION

"We envision a world in which all aspects of the beef value chain are environmentally sound, socially responsible and economically viable."

"We envision a global textile industry that protects and restores the environment and enhances lives."



"The GRSB mission is to advance continuous improvement in sustainability of the global beef value chain through leadership, science and multi-stakeholder engagement and collaboration."

"Textile Exchange inspires and equips people to accelerate sustainable practices in the textile value chain. We focus on minimizing the harmful impacts of the global textile industry and maximizing its positive effects."



Natural Resources



People & The
Community



Animal Health &
Welfare



Food



Efficiency &
Innovation

Environmental impact

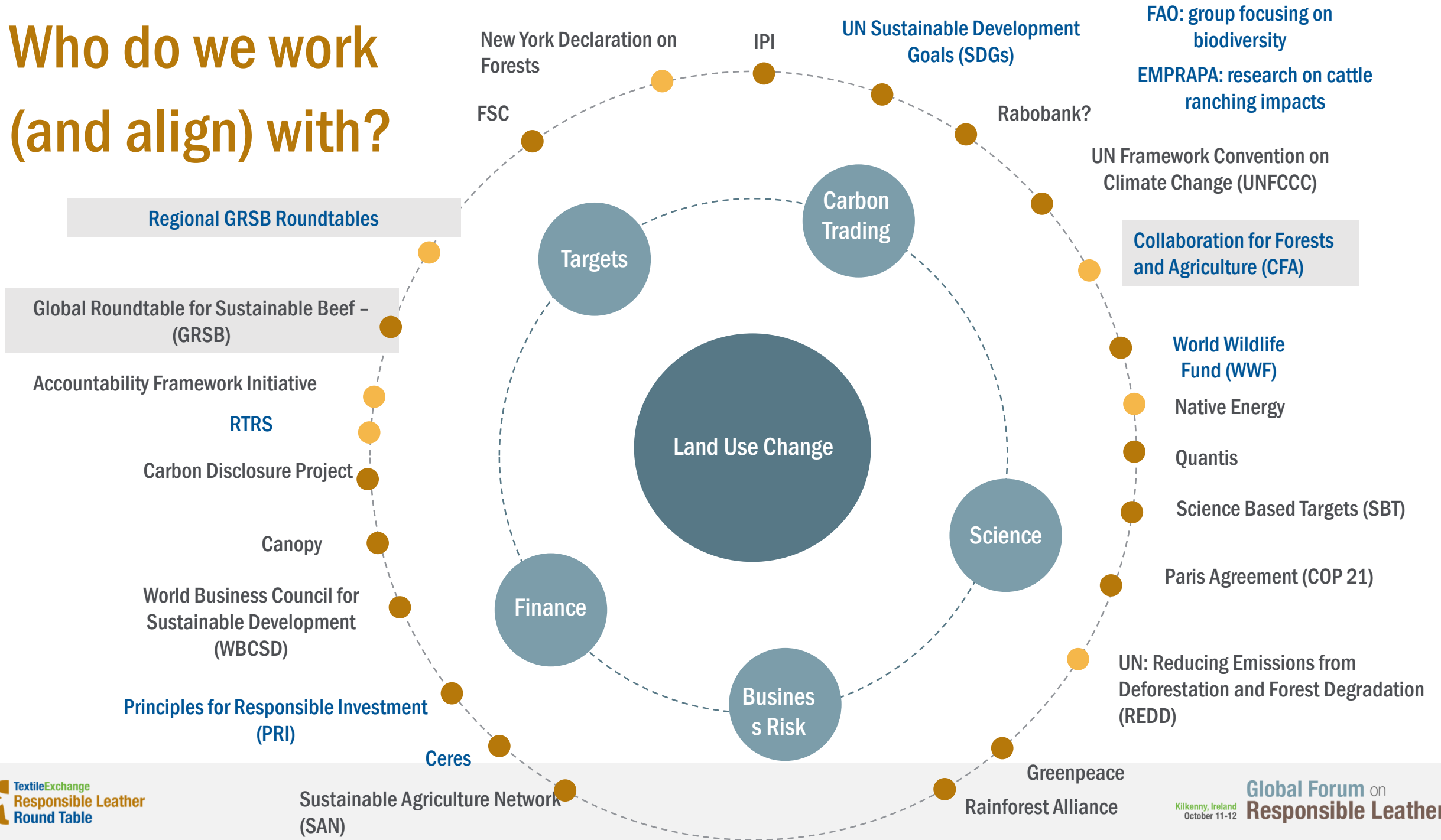
Social impact

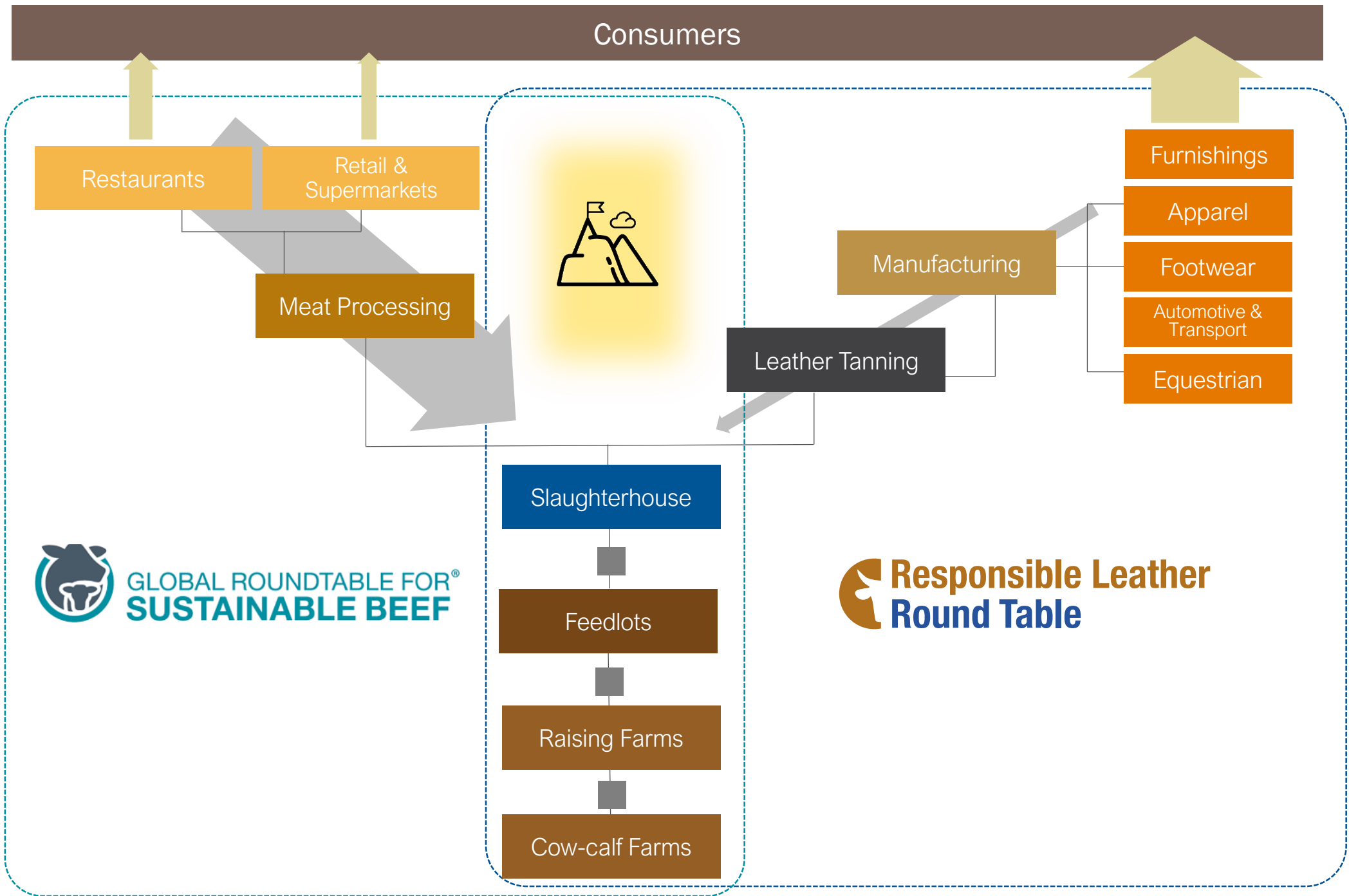
Animal welfare

Traceability and quality

Continuous improvement
and education

Who do we work (and align) with?







GRSB

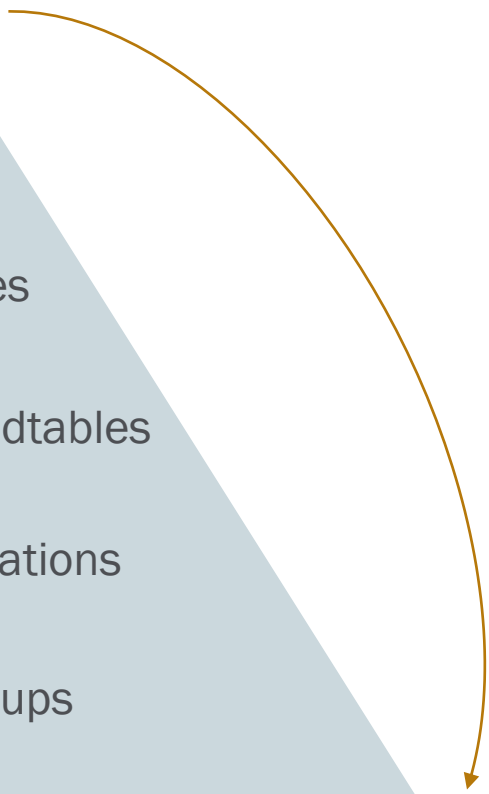
Regional
Roundtables

Sub-regional Roundtables

Partner Organizations

Connecting Groups

Millions of Producers





Opportunities

Working together to tell credible and consistent stories

Leather Naturally

Global marketing and PR campaign to promote leather: aimed at Gen Z and millennials

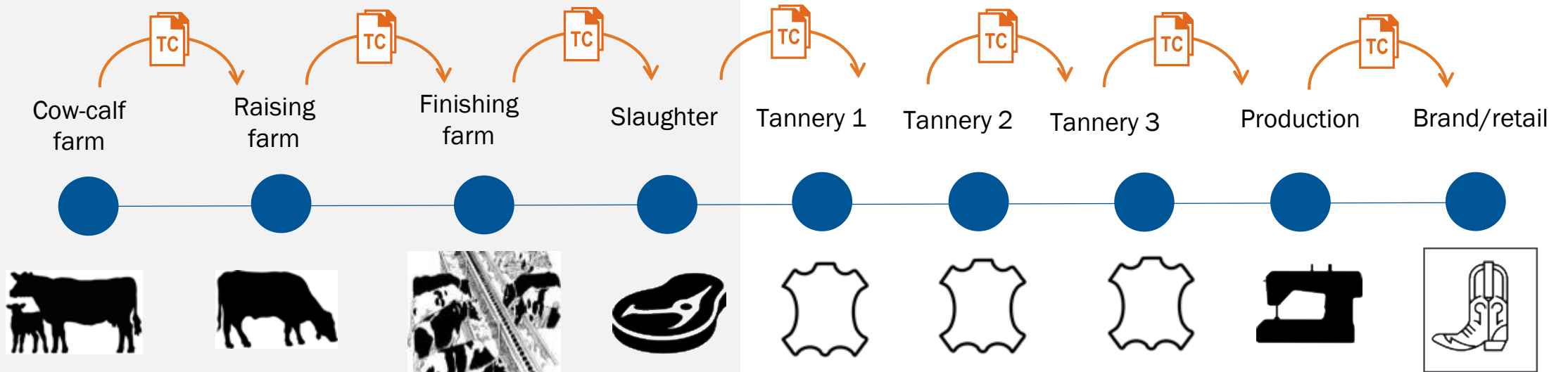
Responsible Leather

B2B, ensuring a strong foundation of best practices to deliver authenticity

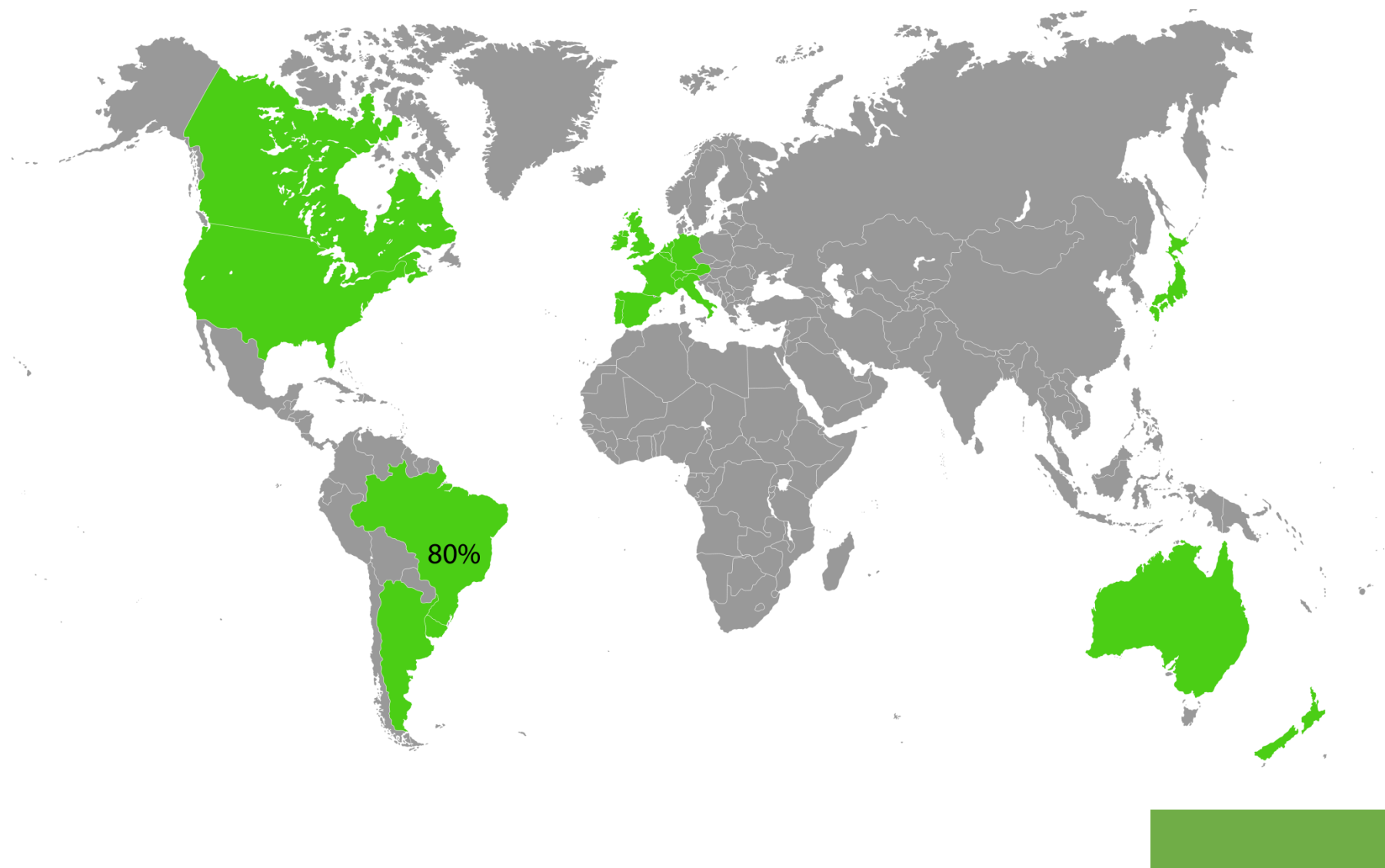
Beef/leather supply network

Producers and companies meeting best practices, and sharing their stories.

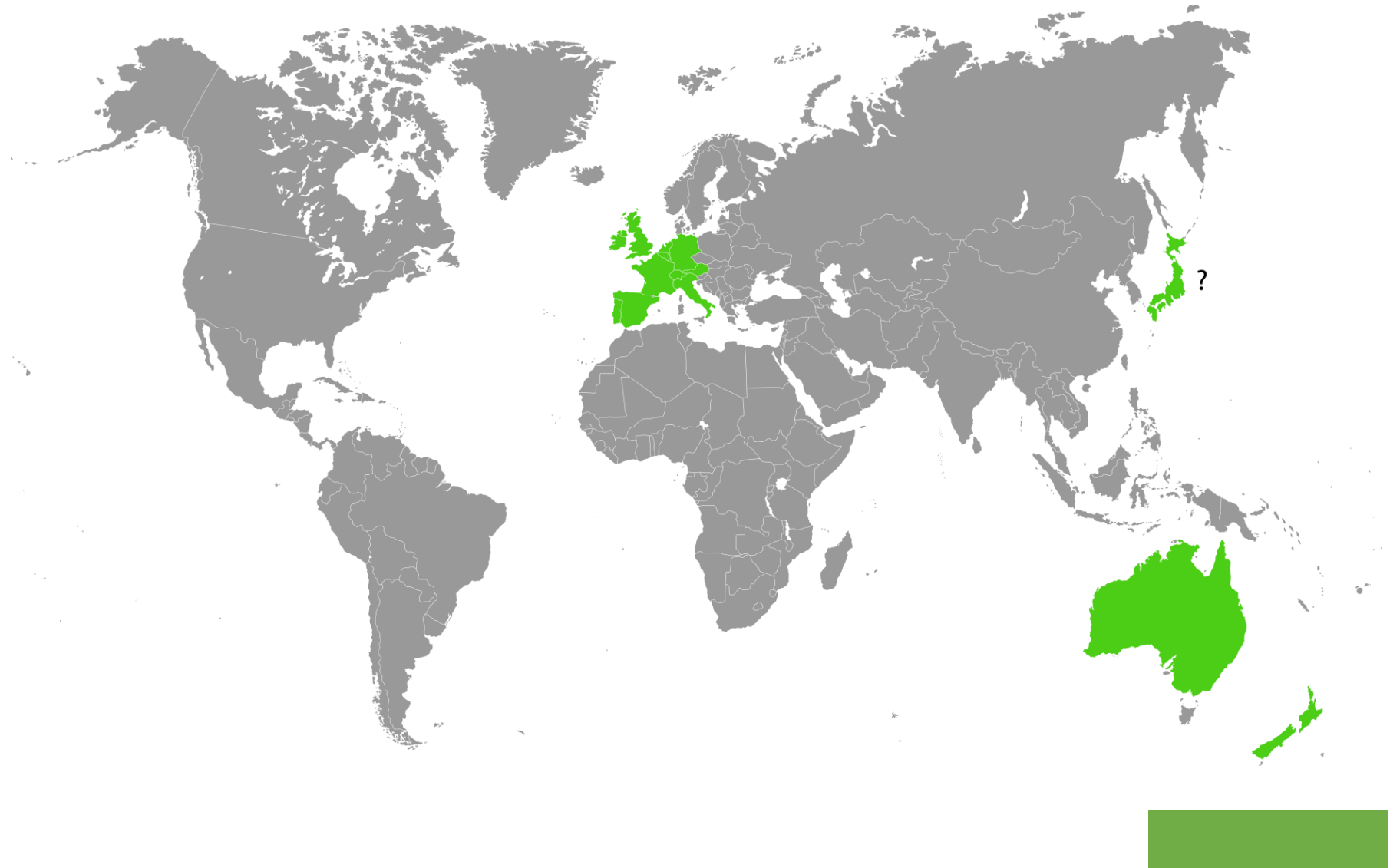
Working together to provide full supply chain traceability.



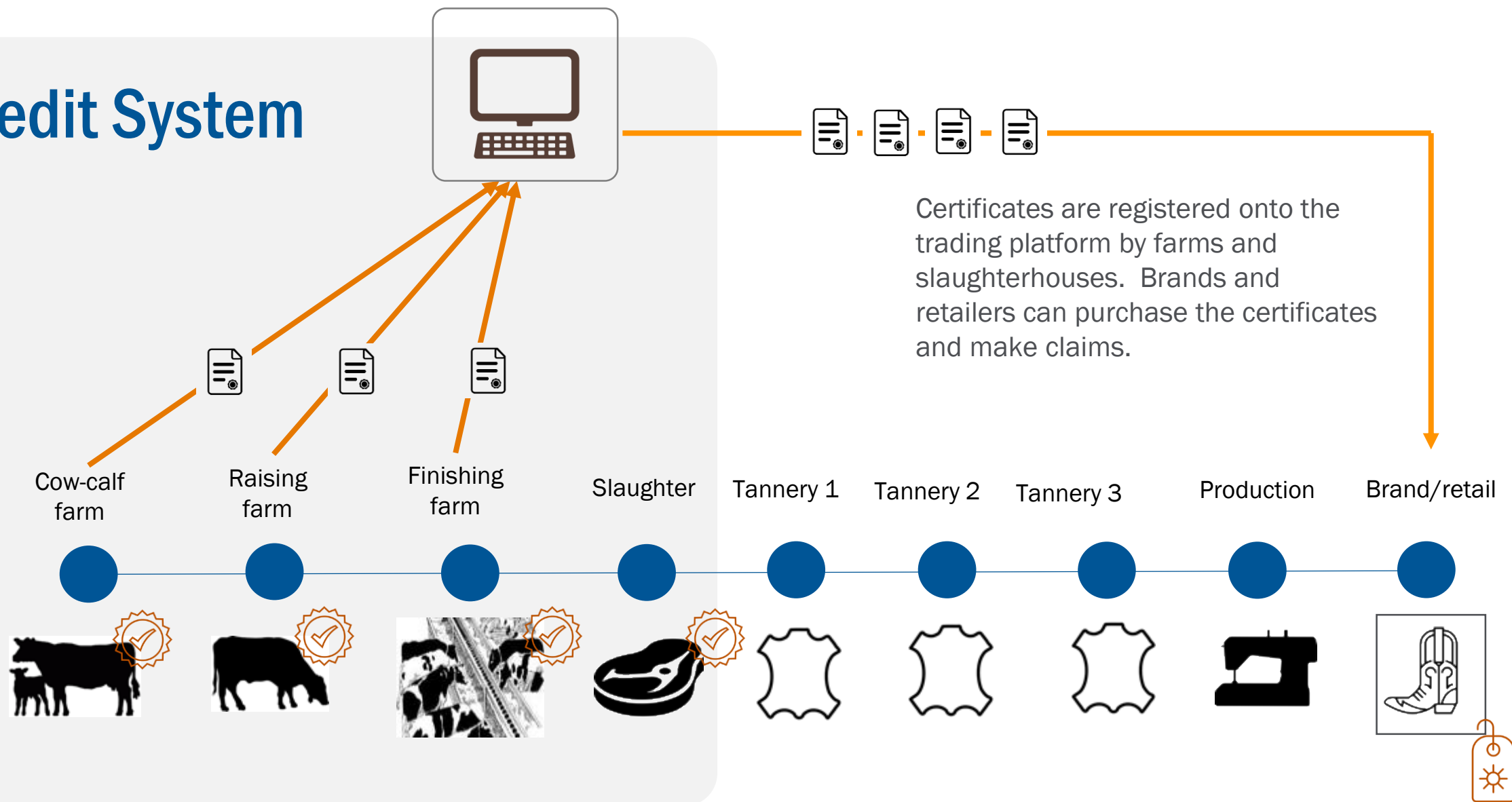
Traceability to slaughterhouse and Direct Farm theoretically possible

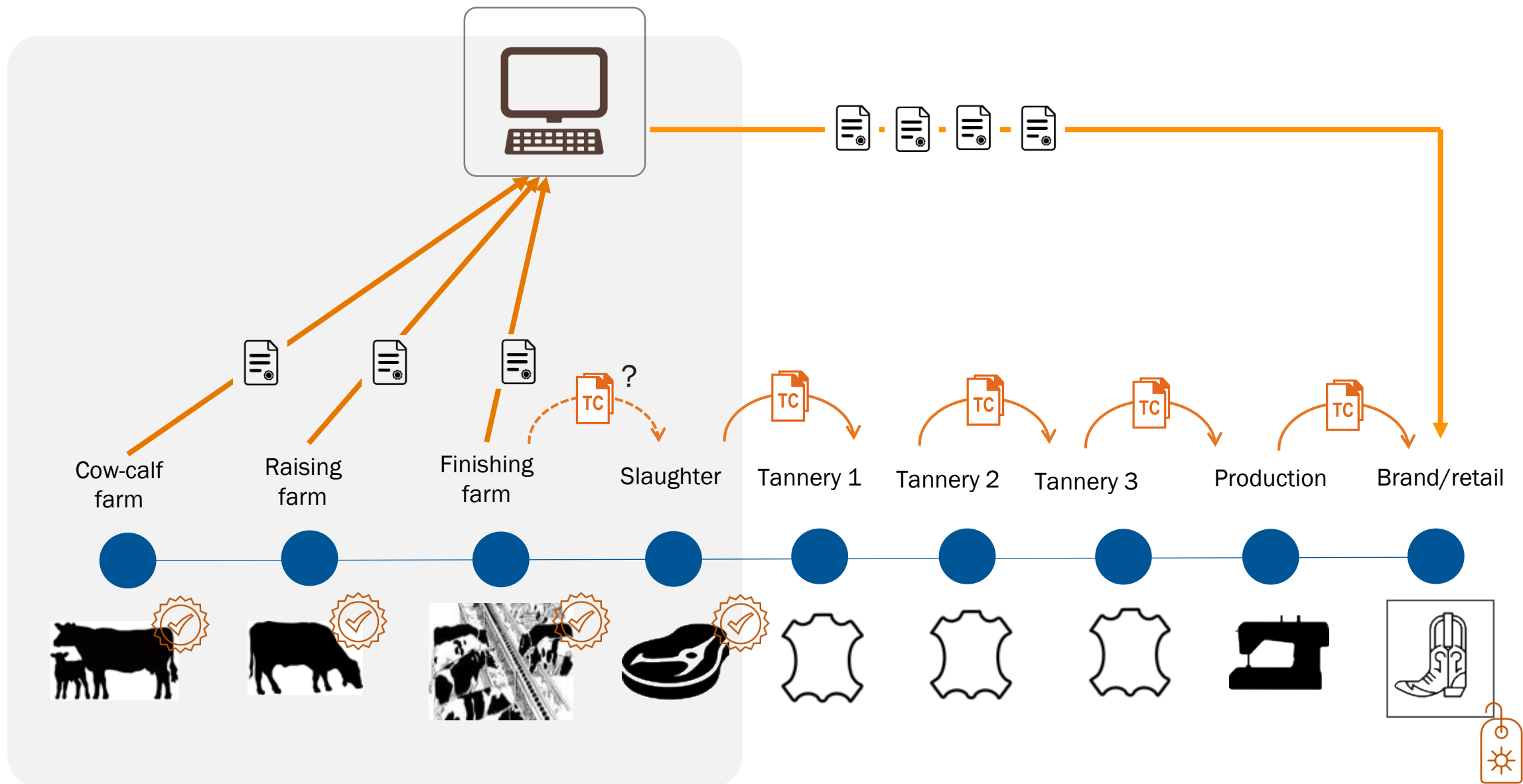


Traceability to birthing farm theoretically possible



Credit System





Be open.

Listen.

Learn.

Share your reality.

UBUNTU: “I am because we are”

Global Forum on
Kilkenny, Ireland
October 11-12 **Responsible Leather**

Friday, October 12th

7:00 a.m. – 8:30 a.m.	A Sustainability Sunrise Session: Leather & Beef
8:30 a.m. – 9:00 a.m.	Break
9:00 a.m. – 9:30 a.m.	Opening & Welcome to the Global Meeting of the RLRT
9:30 a.m. – 10:30 a.m.	Why Act Now?
10:30 a.m. – 10:50 a.m.	Break
10:50 a.m. – 11:00 a.m.	Introduction to Working Sessions
11:00 a.m. – 11:45 a.m.	Animal Welfare Working Session
11:45 a.m. – 12:15 p.m.	Land Use Change Impacts of Farming Working Session
12:15 p.m. – 1:15 p.m.	Lunch
1:15 p.m. – 2:15 p.m.	Leather Manufacturing Working Session
2:15 p.m. – 3:00 p.m.	Social Issues Working Session
3:00 p.m. – 3:30 p.m.	Break
3:30 p.m. – 4:15 p.m.	Credit Trading and Traceability Working Session
4:15 p.m. – 4:50 p.m.	Language and Claims Working Session
4:50 p.m. – 5:00 p.m.	Closing Session
5:15 p.m. – 6:15 p.m.	Cocktail Hour

Thank you GRSB!





VISION

We envision a global textile industry that protects and restores the environment and enhances lives.

MISSION

Textile Exchange inspires and equips people to accelerate sustainable practices in the textile value chain. We focus on minimizing the harmful impacts of the global textile industry and maximizing its positive effects.

GOALS

1. Embed sustainability into evolving business and supply chain strategies.
2. Make it easier for companies to adapt to changing opportunities and requirements in textile sustainability.
3. Ensure that actions taken toward sustainability result in real and meaningful change.



Textile Exchange Around the World

Our 20 team members and ambassadors are spread across 11 countries around the globe





MEMBERSHIP NETWORK

Farm/Fiber



Shanghai Different Chemical Fiber Co.ltd

Suppliers/Manufacturers



Brands/Retailers



Williams-Sonoma

Burberry



otto group



Friends of Textile Exchange





TextileExchange

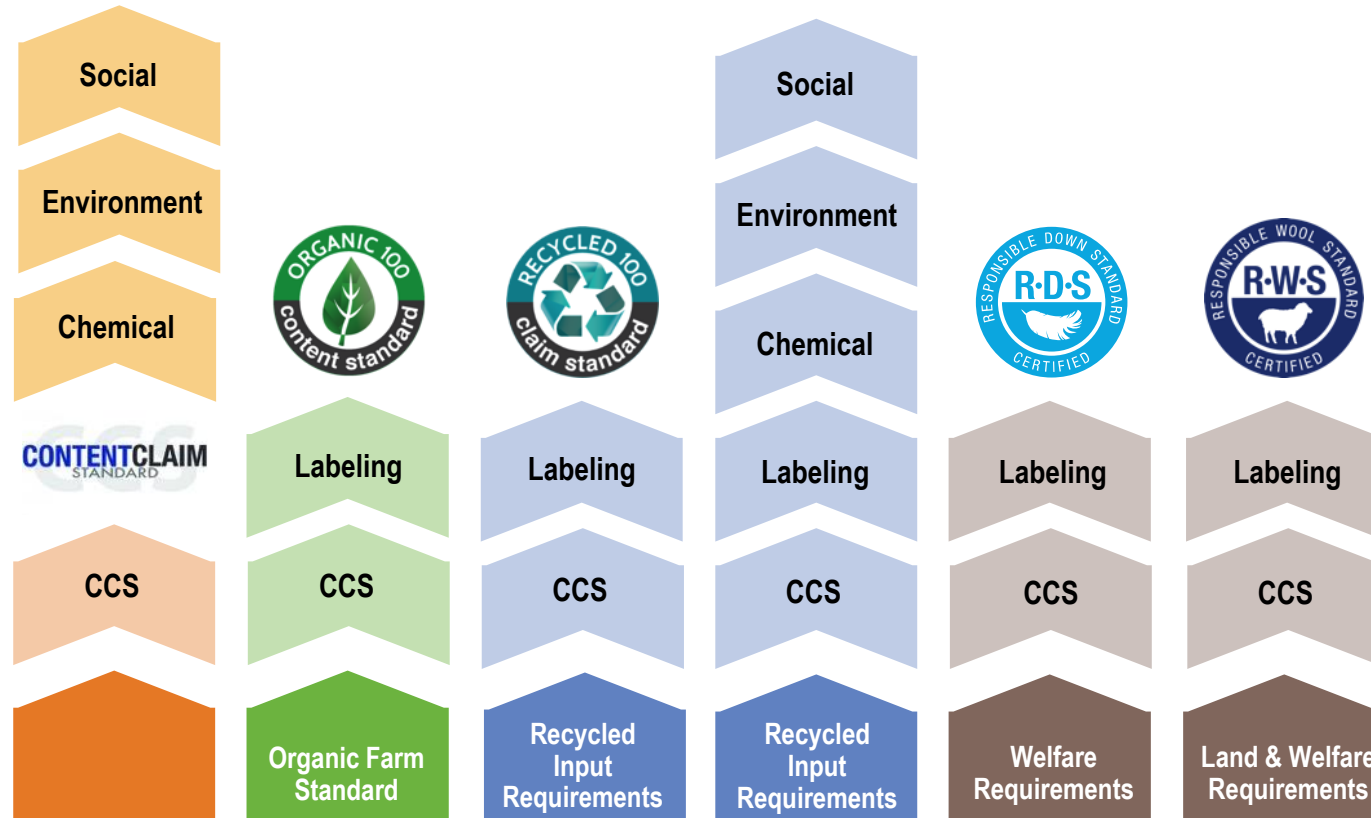


UNITED BY ACTION: **ACCELERATING SUSTAINABILITY IN TEXTILES AND FASHION**

October 22-24 | Milan, Italy



<https://www.travelandleisure.com/articles/hidden-treasures-in-milan>





Responsible Leather is a Textile Exchange initiative aimed at addressing the many issues found within the global leather supply chain.

Responsible Leather Round Table (RLRT)



VISION

We envision a world in which all aspects of the leather value chain are environmentally and socially responsible, promote animal welfare, and is economically viable.



MISSION

Advance responsibility and continuous improvement in the global leather value chain through leadership, inclusive multi-stakeholder engagement and collaboration.



GOALS

1. A platform for stakeholders in the leather industry to engage with each other, share information, and identify common challenges and opportunities.
2. A structure for interacting with other organizations and government bodies.
3. **A forum to agree on priority issues and take action to advance our mission and vision.**

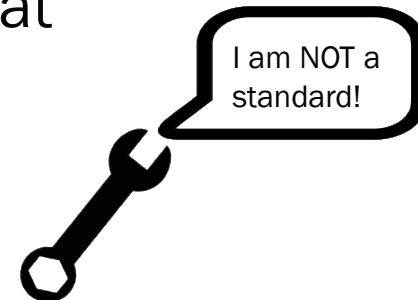
Sector Membership

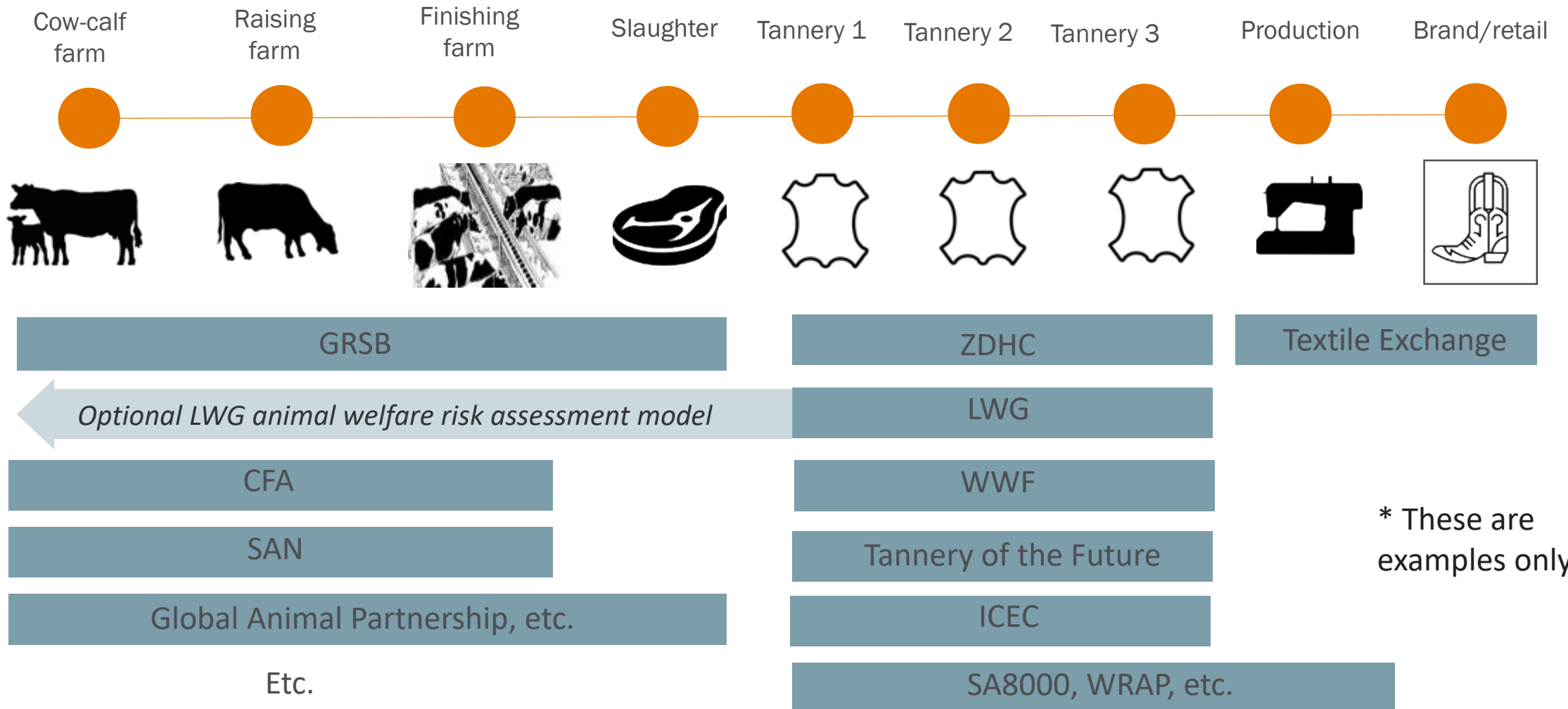
★ = voting member

- ★ **1. Brands and Retailers**
Companies and associations who bring leather products to consumers.
- ★ **2. Supply Chain**
Companies and associations who convert and supply materials for further processing or sale of leather goods.
- ★ **3. Producers**
Farmers, organizations and associations who are actively engaged in the ownership and management of live cattle.
- ★ **4. Civil Society**
Academic institutions, non-governmental organizations, non-commercial institutions, foundations, and associations with a stake in the cattle and leather value chains.
- 5. Professional Services (Consulting Members)**
Individuals or organizations such as regulatory authorities, governmental agencies, consulting/auditing firms and donor organizations; do not belong to one of the voting constituencies, but may request membership as Consulting Members.

Responsible Leather Assessment Tool (RLA) Goals

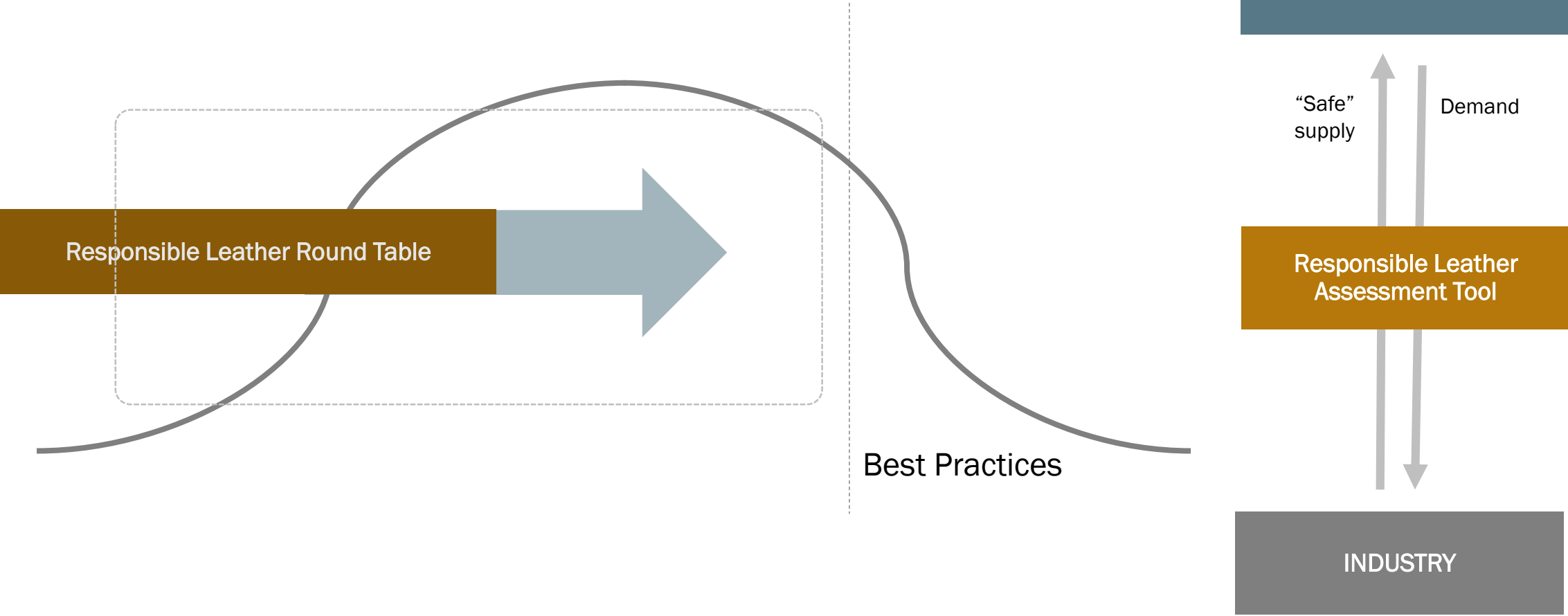
1. Develop a tool that recognizes and drives best practices in the leather industry, leading to positive social, environmental and animal welfare impacts.
2. Establish a clear benchmark for best practices.
3. Provide companies with a means to link their sourcing to more responsible practices and make accurate claims about how they source.
4. Leverage and add value to the existing tools and programs that are driving better practices in the leather industry.
5. Reward and influence the leather industry to incentivize practices that respect animals, people and the environment.





Responsible Leather Assessment Tool

Theory of Change



Animal Welfare
Farm
Transport
Slaughter
Environmental Impacts
Farm (deforestation)
Slaughter
Tanning
Social Impacts
Farm
Slaughter
Tanning
Traceability
Chain of Custody
Book & Claim
Data

	RLA v1	RLRT	RLA v2	RLRT
Animal Welfare	●		●	
Farm	●		●	
Transport	●		●	
Slaughter	●		●	
Environmental Impacts				
Farm (deforestation)	●		●	
Slaughter	○	●	●	
Tanning	●		●	
Social Impacts				
Farm	○	●	○	●
Slaughter	○	●	●?	●
Tanning	●?	●	●	
Traceability				
Chain of Custody	●		●	
Book & Claim	●		●	
Data	●		●	



Why leather?

Leather has Global Impacts



Leather tanning uses large amounts of water in combination with sometimes harmful chemicals. If not addressed properly, tanning operations can have significant impacts on water quality.



From smallholder farmers to slaughterhouse workers to sewers, people contribute to and are impacted by the production of leather. There are many opportunities to improve working conditions and livelihoods of the people involved.

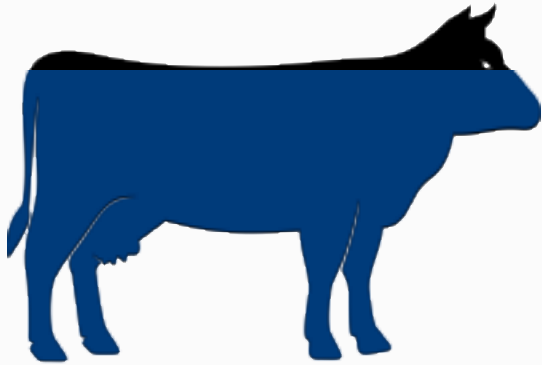


Through its connection to the beef industry, leather is strongly linked to the climate impacts of land use. Requiring leather to originate from farms that are not deforesting will have a positive impact on greenhouse gas emissions.



Cattle farming gives the opportunity to “take urgent and significant action to reduce the degradation of natural habitats, halt the loss of biodiversity and, by 2020, protect and prevent the extinction of threatened species.”

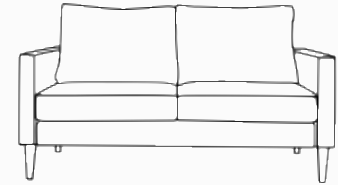
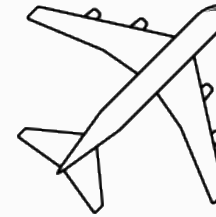
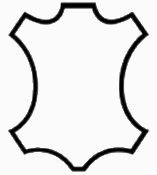
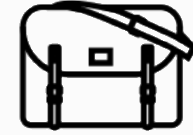
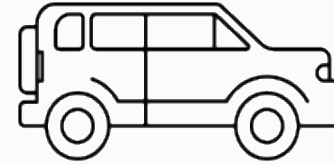
The Numbers



According to LCA calculations, 95% of the economic value is allocated to food. (lcafood2014.org)

Therefore,

Leather is < 5% of the economic value of a cow



The leather industry is about **\$40 billion**

The value of the RLI stakeholders is
> \$1.2 trillion



The apparel industry is **\$1.7 trillion**

Europe's meat and dairy production must halve by 2050, expert warns



“Europe’s animal farming sector has exceeded safe bounds for [greenhouse gas emissions](#), [nutrient flows](#) and [biodiversity loss](#), and urgently needs to be scaled back, according to [a major report](#). ”

“The study calls for the European commission to urgently set up a formal inquiry mandated to propose measures – including taxes and subsidies – that “discourage livestock products harmful to health, climate or the environment”. Livestock has [the world’s largest land footprint](#) and is growing fast, with close to 80% of the planet’s agricultural land now used for grazing and animal feed production, even though meat delivers [just 18% of our calories](#). ”

New Report: Biotech Fabrics May Threaten Farmer Livelihoods, Ecosystems

By Jasmin Malik Chua



Types Love & sex Health & fitness Home & garden Women Family Travel Money

Helsinki fashion week to ban leather as vegan fabrics catch on

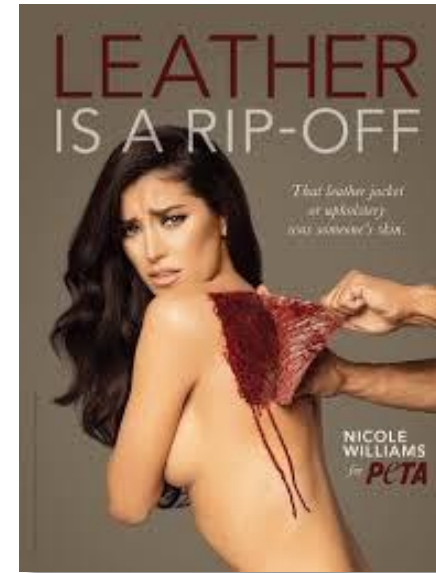
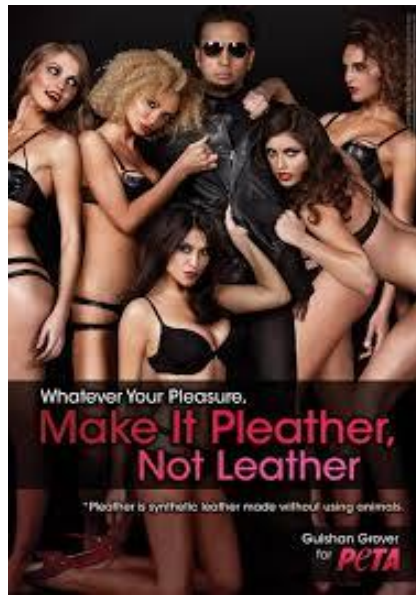
Vegan collections feature materials such as synthetic suede and B-mesh made from recycled bottles



▲ A decision by Stella McCartney, who has been the most famous advocate of vegan materials in the fashion

“ETC Group and Fibershed ... cautions that any commercial-scale expansion of biosynthetic fabrics, such as those derived from genetically engineered (GE) microorganisms, could exert undue pressures on ecosystems while creating potentially dangerous sources of biotech waste. Worse, by diverting support from so-called “truly sustainable” natural fiber economies, such technologies could also undermine farmers worldwide.”

“The global [synthetic leather market](#) is expected to reach USD 85.05 billion by 2025, according to a new report by Grand View Research, Inc. Globally increasing applications in foot wears has been a major factor driving market growth. In addition, increasing focus towards animal rights led by several organizations and rising stringency in laws governing real leather are propelling demand for synthetic leather.”







Why Beef?





VISION

"We envision a world in which all aspects of the beef value chain are environmentally sound, socially responsible and economically viable."

"We envision a global textile industry that protects and restores the environment and enhances lives."



"The GRSB mission is to advance continuous improvement in sustainability of the global beef value chain through leadership, science and multi-stakeholder engagement and collaboration."

"Textile Exchange inspires and equips people to accelerate sustainable practices in the textile value chain. We focus on minimizing the harmful impacts of the global textile industry and maximizing its positive effects."



Natural Resources



People & The
Community



Animal Health &
Welfare



Food



Efficiency &
Innovation

Environmental impact

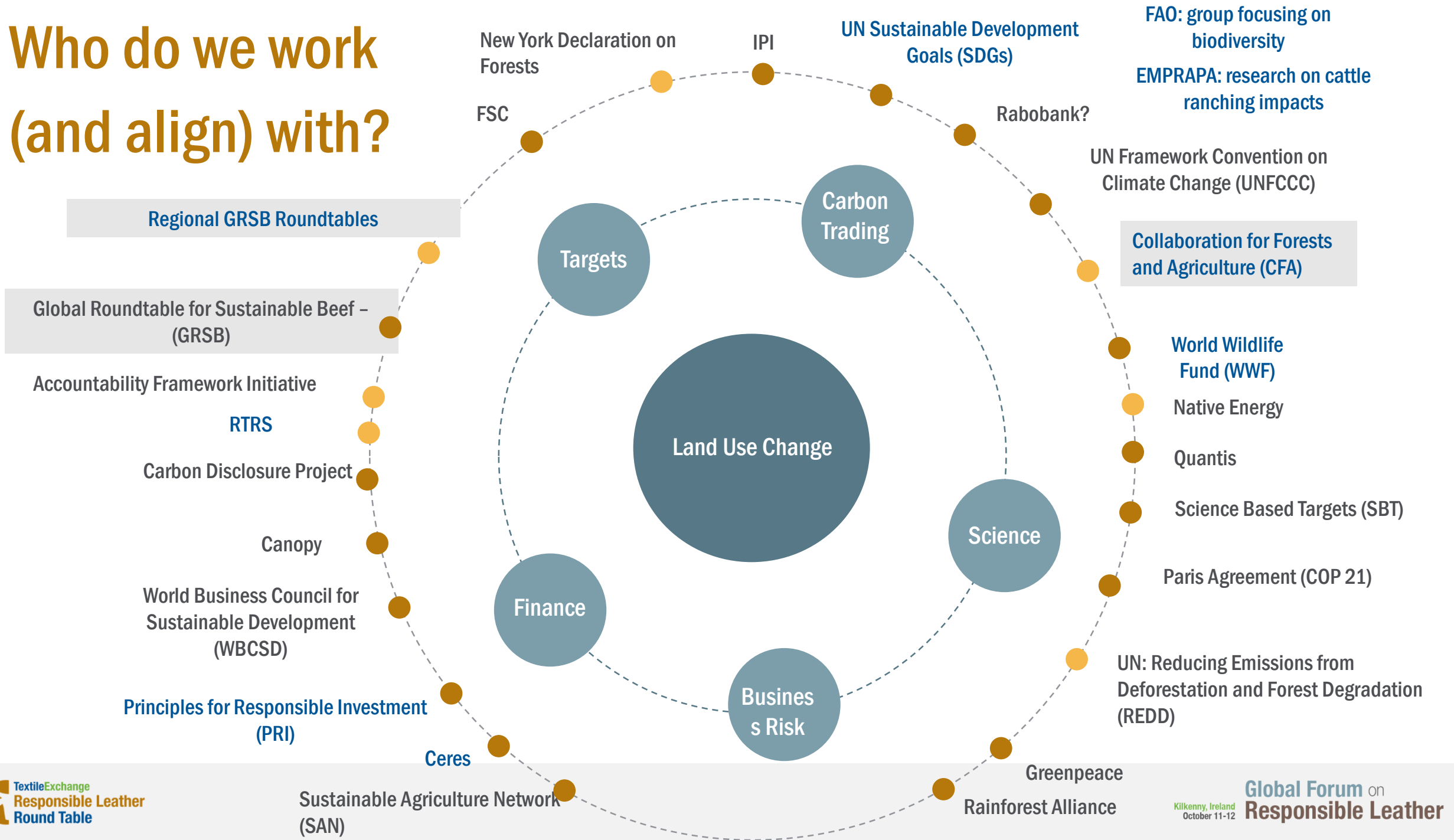
Social impact

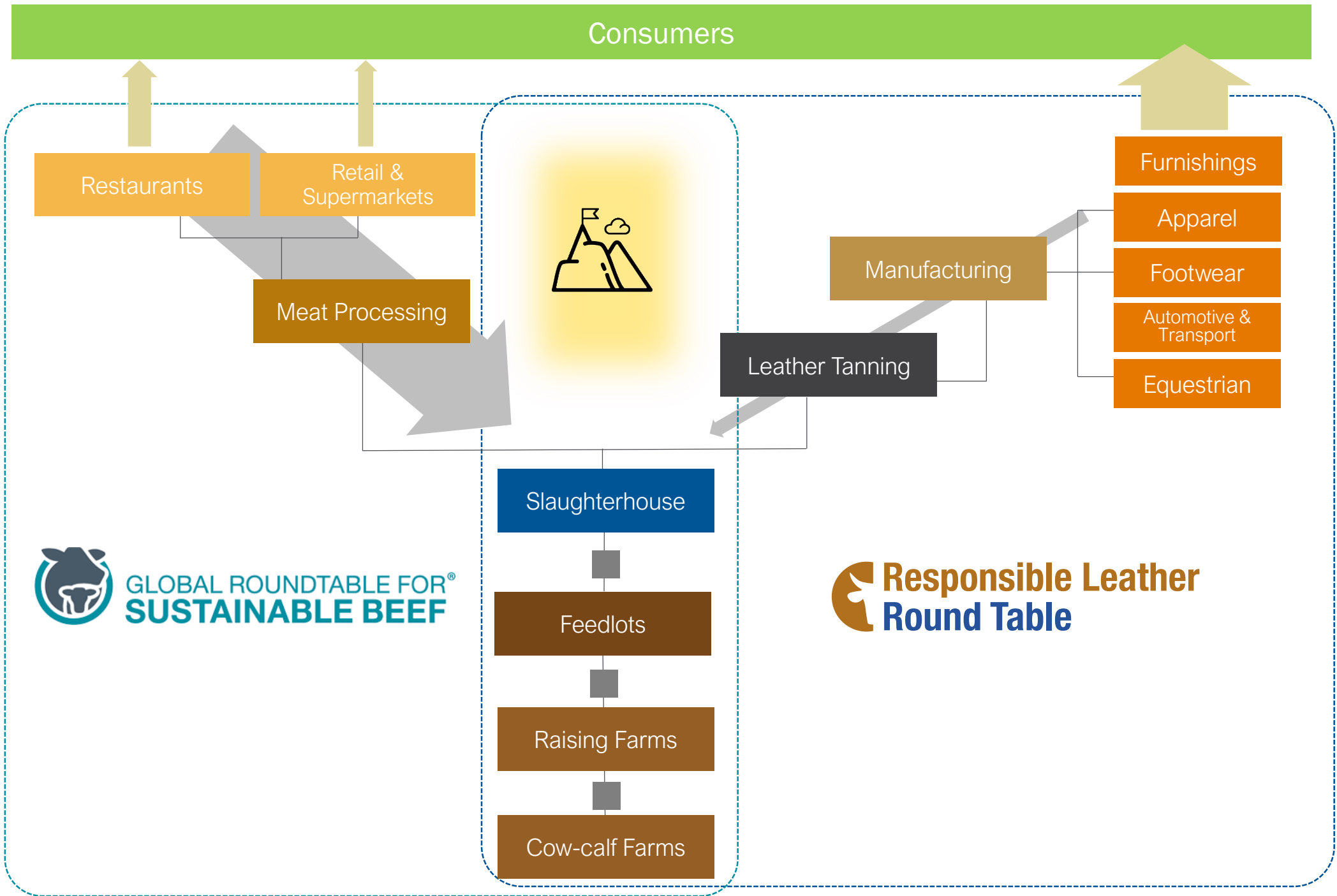
Animal welfare

Traceability and quality

Continuous improvement
and education

Who do we work (and align) with?







GRSB

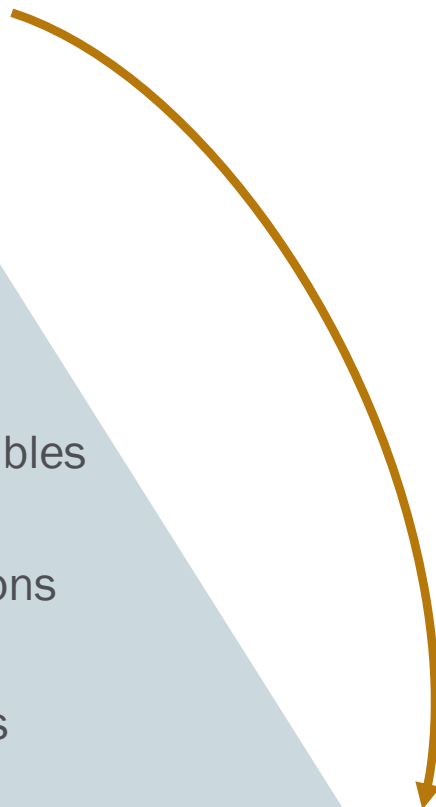
Regional
Roundtables

Sub-regional Roundtables

Partner Organizations

Connecting Groups

Millions of Producers





Opportunities Together

Working together to tell credible and consistent stories

Leather Naturally

Global marketing and PR campaign to promote leather: aimed at Gen Z and millennials

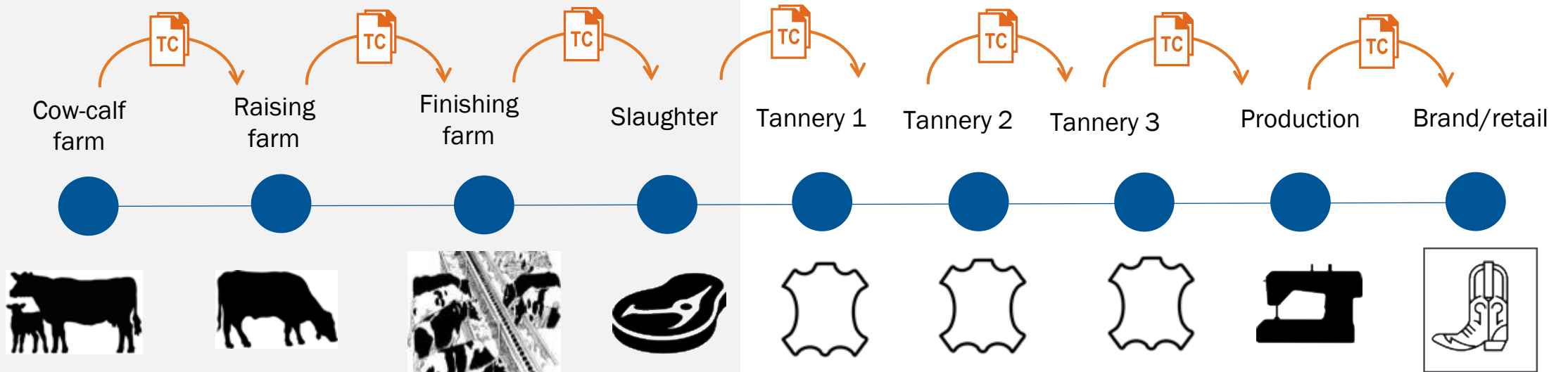
Responsible Leather

B2B, ensuring a strong foundation of best practices to deliver authenticity

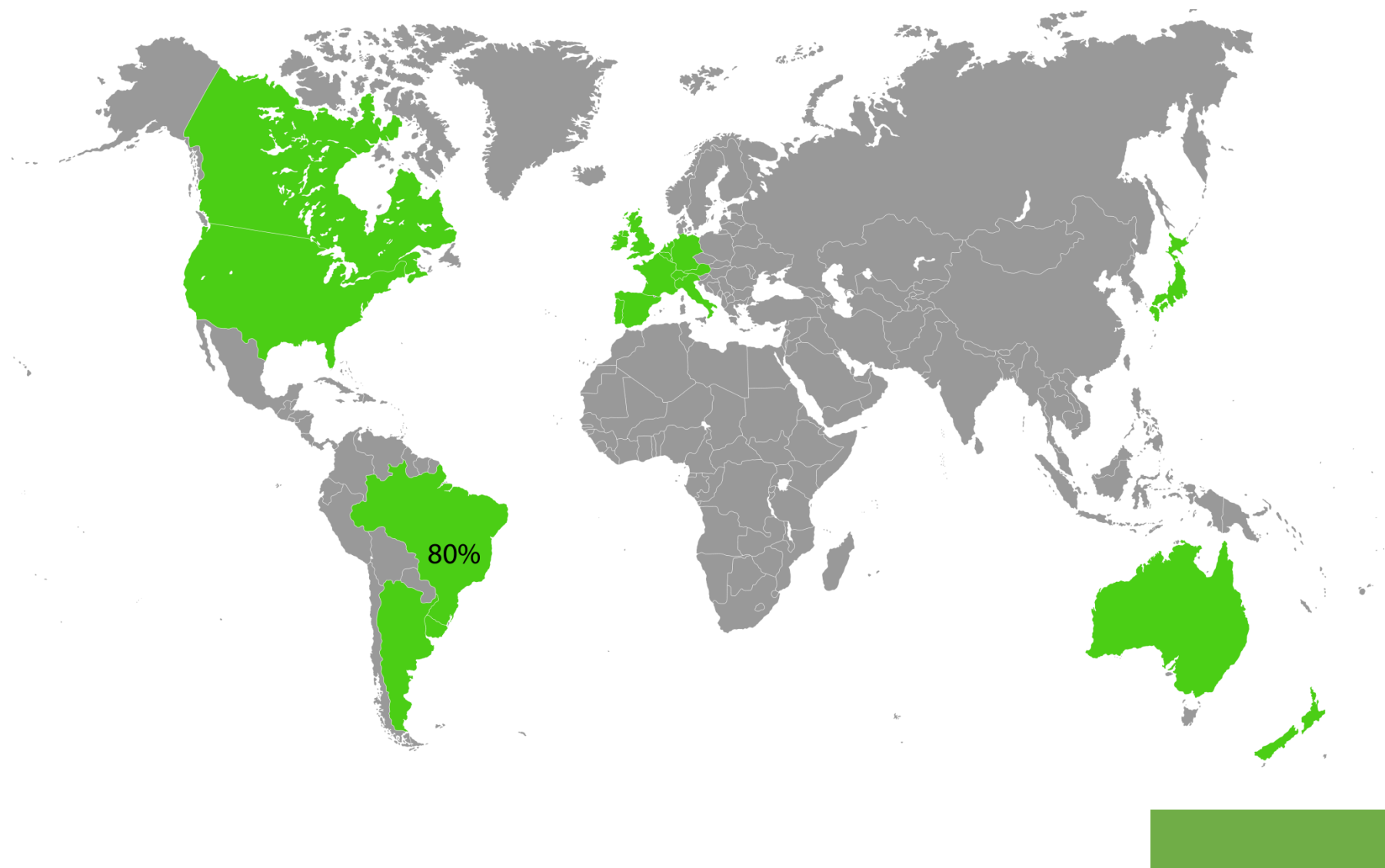
Beef/leather supply network

Producers and companies meeting best practices, and sharing their stories.

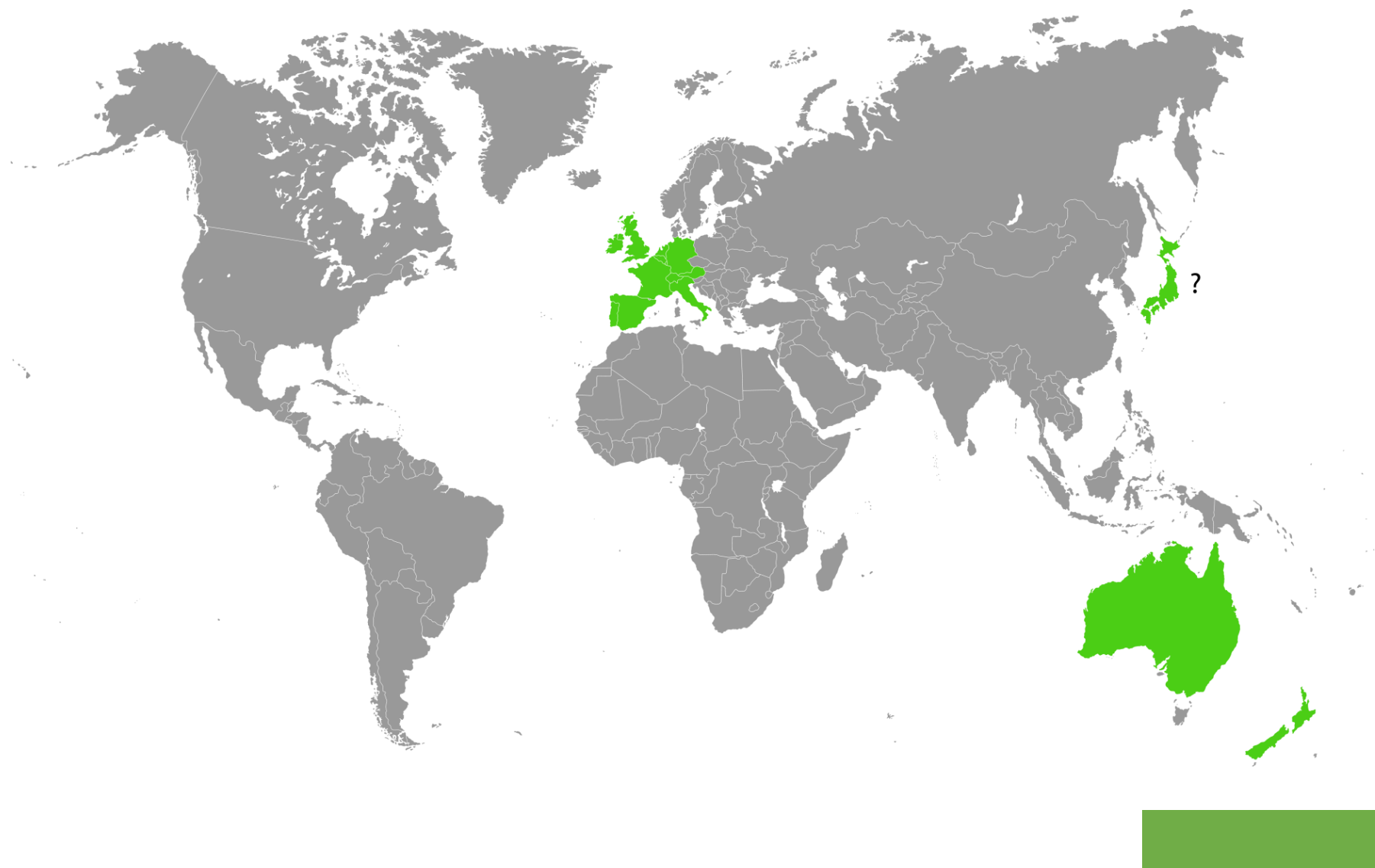
Working together to provide full supply chain traceability.



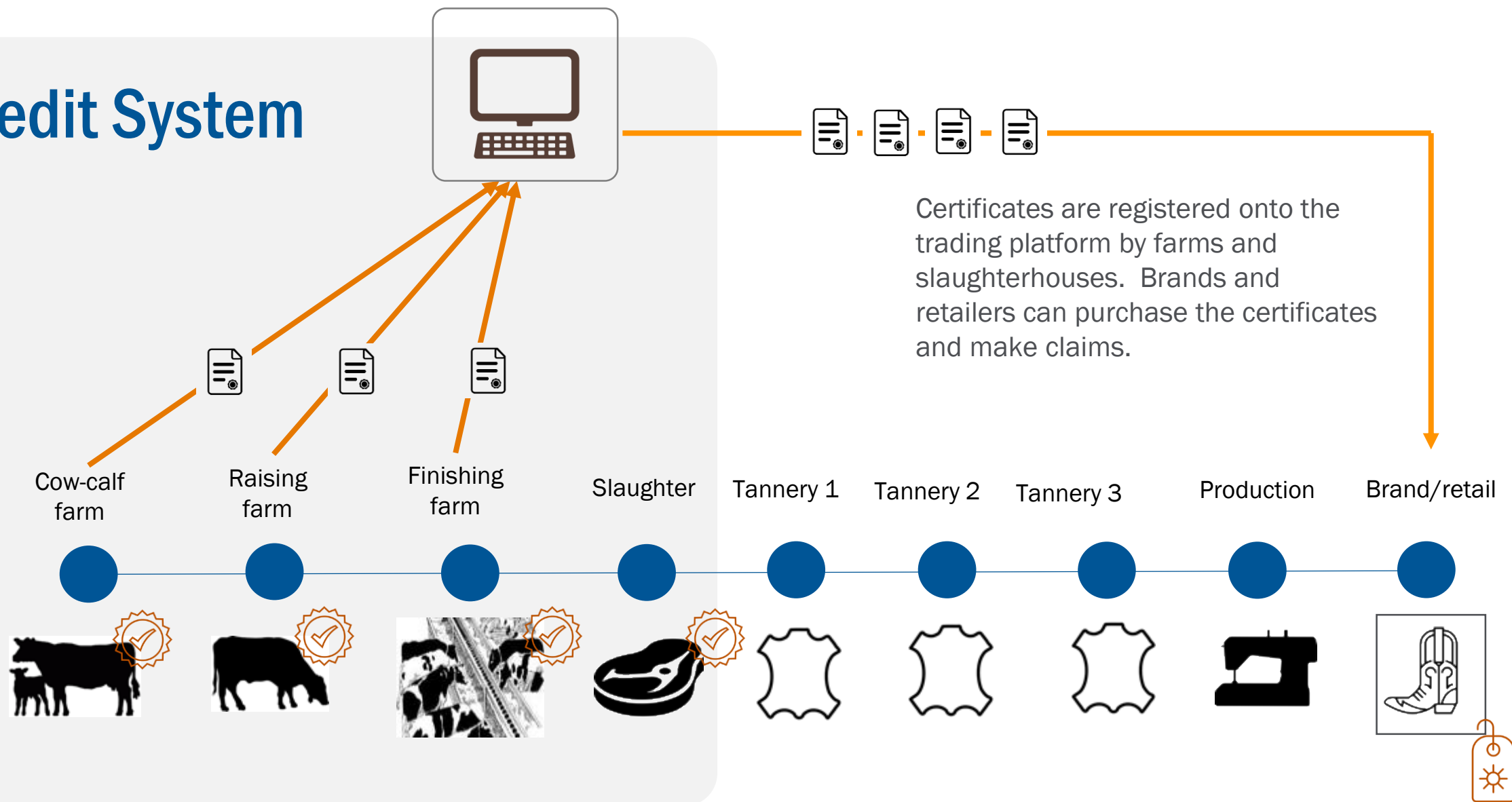
Traceability to slaughterhouse and Direct Farm theoretically possible

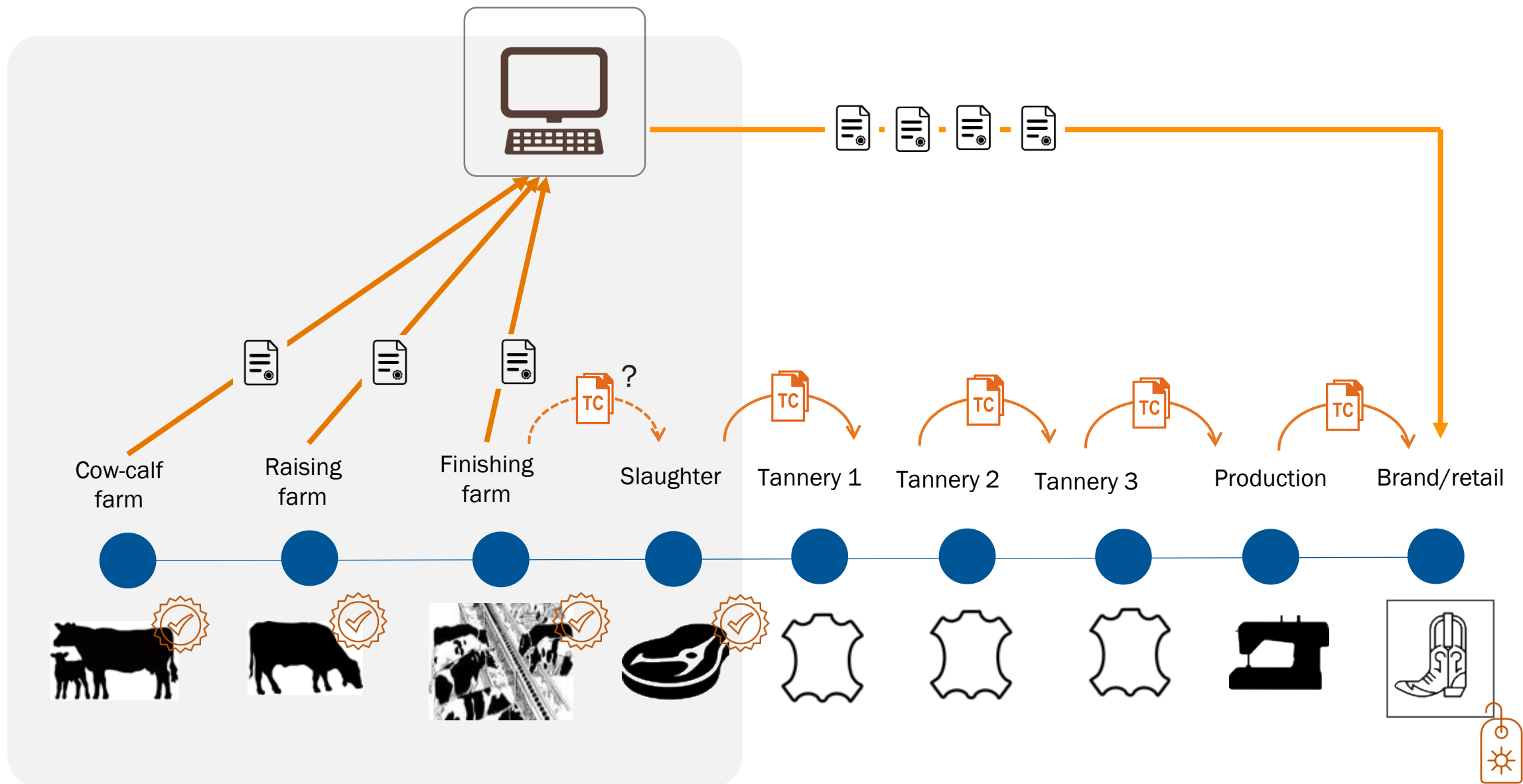


Traceability to birthing farm theoretically possible



Credit System





Be open.

Listen.

Learn.

Share your reality.

UBUNTU: “I am because we are”

Kilkenny, Ireland
October 11-12

Global Forum on **Responsible Leather**

Friday, October 12th

7:00 a.m. – 8:30 a.m.	A Sustainability Sunrise Session: Leather & Beef
8:30 a.m. – 9:00 a.m.	Break
9:00 a.m. – 9:30 a.m.	Opening & Welcome to the Global Meeting of the RLRT
9:30 a.m. – 10:30 a.m.	Why Act Now?
10:30 a.m. – 10:50 a.m.	Break
10:50 a.m. – 11:00 a.m.	Introduction to Working Sessions
11:00 a.m. – 11:45 a.m.	Animal Welfare Working Session
11:45 a.m. – 12:15 p.m.	Land Use Change Impacts of Farming Working Session
12:15 p.m. – 1:15 p.m.	Lunch
1:15 p.m. – 2:15 p.m.	Leather Manufacturing Working Session
2:15 p.m. – 3:00 p.m.	Social Issues Working Session
3:00 p.m. – 3:30 p.m.	Break
3:30 p.m. – 4:15 p.m.	Credit Trading and Traceability Working Session
4:15 p.m. – 4:50 p.m.	Language and Claims Working Session
4:50 p.m. – 5:00 p.m.	Closing Session
5:15 p.m. – 6:15 p.m.	Cocktail Hour



www.ResponsibleLeather.org

ResponsibleLeather@TextileExchange.org